

In the Still of December

Santa Fe Women's Ensemble ~ Dr. Linda Raney, Music Director
Winter 2022 ~ 42nd Season



SFWE

In dulci jubilo, nun singet und seid froh!

("In quiet joy, let us our homage show!")

Welcome to our Winter 2022 concerts!

We are so pleased that you are joining us for *In the Still of December* and the 42nd season of the Santa Fe Women's Ensemble. In the cold shorter days and longer nights during this month, we are reminded of the profound quiet and stillness available to us at this time of year. From traditional European Christmas carols and sparkling new winter treasures to our charming, energetic 2022 commission, *A Christmas Telling of St. Bride of the Isles*, we offer an afternoon of music to both awaken your senses and calm your spirit.



Mission:

To present adventurous programming in live and online choral performances, to commission new music for treble voices, and to engage in community outreach and education.



This project is made possible in part by New Mexico Arts, a division of the Department of Cultural Affairs, and the National Endowment for the Arts.

In the *Still* of *December*

Winter 2022

Adam Lay Ybounden

Matthew Larkin

In dulci jubilo

German traditional carol
Arr. by Laura Hawley

Alleluia, Adorare

Mitchell Covington

Tundra

Ola Gjelo

Miles to Go Before I Sleep

Larry Nickel

Deck the Hall

Welsh traditional carol
Arr. by John Rutter

Still, Still, Still

Austrian traditional carol
Arr. by Ken Berg

A Christmas Telling of St. Bride of the Isles

~ World Premiere ~

Sarah Jaysmith

Ave Maria "Tanti anni prima" ~ Instrumental ~

Astor Piazzolla

Christmas Snowflakes

Laura Hawley

Winter Awakening

Robbie Smith
Arr. by Erica Phare-Bergh

Bring a Torch, Jeannette, Isabella!

French traditional carol
Arr. by Sarah Jaysmith

Hodie Christus Natus Est

Kelly-Marie Murphy

Wexford Carol

English and Irish traditional carol
Arr. by Laura Hawley

A Winter Ride

Joan Szymko

Shchedryk

Ukrainian traditional carol
Arr. by Mykola Leontovych

with

Bill Epstein, *piano* ~ Carla Kountoupes, *violin* ~ Lynn Osborne, *recorder*



*In the **Still** of **December*** Program Notes

In this winter's concert we explore aspects of December, especially its quality of stillness. Most of us understand the sensation of walking during a night's snowfall—the crunch of your boots in the snowdrifts, the invigorating intake of crisp air, the underlying profound quiet. Nature seems to be holding its breath, and you can almost hear the crisp snowflakes settling to the ground. Overhead, the milky-white clouds reveal patches of dark winter sky and the crystal glitter of stars. Our diverse pieces reflect this quietness, as well as other magical elements of this winter season. We are delighted to share them with you today.

Adam Lay Ybounden Text: Anonymous 15th century
Music: Matthew Larkin

Using an anonymous 15th-century text about the consequences of Adam eating the apple in the Garden of Eden, Matthew Larkin weaves three melodic lines shaped like plainchant, a form of early Christian music.

Adam lay ybounden
Bounden in a bond
Four thousand winter thought he not too long.

And all was for an apple,
An apple that he took
As clerkes finden written in their book.

Ne, ne, had the apple taken been.
Ne had never our ladie
Abeen heav'ne queen.

Blessed be the time
That apple taken was
Therefore we moun singen
Deo gracias.

PROUD SUPPORTER OF THE
Santa Fe Women's Ensemble

Congratulations on 43 years of
superb performances!



CHRIS HAYNES
505.660.6121
chris.haynes@sothebys.realty

Sotheby's
INTERNATIONAL REALTY

326 Grant Avenue | Santa Fe, NM 87501 | 505.988.2533 | sothebysrealty.com

© 2022 Sotheby's International Realty. All Rights Reserved. Sotheby's International Realty® is a registered trademark and used with permission. Each Sotheby's International Realty office is independently owned and operated, except those operated by Sotheby's International Realty, Inc. The Sotheby's International Realty network fully supports the principles of the Fair Housing Act and the Equal Opportunity Act.

In dulci jubilo

Text: German traditional carol
Trans. by Robert Lucas Pearsall (1837)
Music: Arr. by Laura Hawley

Laura Hawley, a gifted young Canadian composer, has arranged this popular German carol, known in English as "Good Christian Friends, Rejoice," by combining a driving piano accompaniment imitating the perky tune.

In dulci jubilo, nun singet und seid froh!
Unsers Herzens Wonne leit in praesepio,
Und leuchtet als die Sonne matris in gremio
Alpha es et O!

O Jesu parvule, nach dir ist mir so weh
Tröst mir mein Gemüte, o Puer optime;
Durch alle deine Güte, o Princeps Glorïae,
Trahe me post te!

O Patris caritas! O Nati lenitas!
Wir wärn all' verloren per nostra crimina;
So hat er uns erworben coelorum gaudia,
Coelorum gaudia.

Ubi sunt gaudia? Nirgends mehr denn da,
Da die Engel singen nova cantica,
Und die Schellen klingen in Regis curia;
Eia, wärn wir da!

In quiet joy, let us our homage show!
Our heart's joy reclineth in a manger,
And like a bright star shineth in the mother's lap
Thou art Alpha and Omega!

O tiny Jesus, I yearn for thee alway
Listen to my ditty, O best of boys;
Have pity on me, O Prince of glory,
Draw me unto thee!

O father's caring! O newborn's mildness!
Deeply were we stained by our crimes;
But thou hast for us gained heavenly joy,
Heavenly joy.

Where be joys? If that they be not there,
There are angels singing new songs,
There the bells are ringing at the king's court;
O that we were there!

Alleluia, Adorare

Text: Latin Liturgical text
Music: Mitchell Covington

Mitchell Covington alternates sections of homophony with counterpoint in his haunting composition using an 11th-century Latin liturgical text for Epiphany (January 6), commemorating the wise men's visit to see the Christ child in Bethlehem.

Alleluia, Vidimus stellam ejus in oriente,
et venimus cum munieribus
adorare, adorare Dominum.
Amen.

Alleluia, we saw his star in the east,
and we came with the gifts
to worship, to worship the Lord.
Amen.



Voices of Tarot
Barbara Doern Drew

Ancient wisdom for
the modern journey

bdoerndrew@gmail.com
505.660.8207
tarotbddrew.com



Creative Experiences in the Historic District
of Downtown Santa Fe

www.ArtfulSoulSantaFe.com

ARTFUL SOUL
CREATIVE EXPERIENCES
SANTA FE, NM





Are you living your best financial life?

As your Financial Advisors,
we work a little differently.

Our team focuses on your
goals so we can help you
plan smarter, save more,
and enjoy the retirement
of your dreams.

Schedule Your No-Obligation Conversation

844-507-0961 | BetterMoneyDecisions.com

460 ST. Michaels Dr. Suite 902, Sante Fe, NM 87505



“For Women, By Women”

Lea Ann Knight, CFP®

Managing Partner

Tundra

Text: Charles A. Silvestri (2010)

Music: Ola Gjeilo

Soloist ~ Julie Kirk, soprano

Poet Charles Anthony Silvestri and Norwegian-American composer Ola Gjeilo describe sonically the empty, but active landscape of the tundra as the “wind rushes through,” using piano and the singers’ voices.

Wide, worn and weathered,
Sacred expanse
Of green and white and granite grey;
Snowy patches strewn,
Anchored to the craggy earth,
Unmoving;
While clouds dance
Across the vast, eternal sky.

Miles to Go Before I Sleep Text: Robert Frost (1922)

Music: Larry Nickel

This contemplative piece uses as its text the renowned 1922 poem by Robert Frost “Stopping by Woods on a Snowy Evening,” which describes a moment of pause in the windy, snowy journey of a horse and his rider. Canadian composer Larry Nickel lyrically portrays various levels of interpretation, from literally taking a break from the busyness and responsibilities of life to appreciate the quiet beauty of nature and its renewing effect to tapping into our yearning for eternal sleep, or death.

Whose woods these are I think I know.
His house is in the village, though;
He will not see me stopping here
To watch his woods fill up with snow.

My little horse must think it queer
To stop without a farmhouse near
Between the woods and frozen lake
The darkest ev’ning of the year.

But I have promises to keep,
and miles to go before I sleep.

He gives his harness bells a shake
To ask if there is some mistake.
The only other sound’s the sweep
Of easy wind and downy flake.

The woods are lovely, dark and deep,
But I have promises to keep,
And miles to go before I sleep,
And miles to go before I sleep.

Deck the Hall

Text: Welsh traditional carol
Music: Arr. by John Rutter

With extra “fa, la, la, la’s” and compelling counterpoint, English composer John Rutter skillfully unfolds this familiar Welsh carol with a sassy new twist.

Deck the hall with boughs of holly, Fa, la, la, la, ...
'Tis the season to be jolly, Fa, la, la, la, ...
Fill the mead cup, drain the barrel, Fa, la, la, la, ...
Troll the ancient Christmas carol, Fa, la, la, la, ...

See the flowing bowl before us, Fa, la, la, la, ...
Strike the harp and join the chorus, Fa, la, la, la, ...
Follow me in merry measure, Fa, la, la, la, ...
While I sing of beauty's treasure, Fa, la, la, la, ...

Fast away the old year passes, Fa, la, la, la, ...
Hail the new, ye lads and lassies, Fa, la, la, la, ...
Laughing, quaffing, all together, Fa, la, la, la, ...
Heedless of the wind and weather, Fa, la, la, la, ...

Still, Still, Still

Text: Austrian traditional carol
Music: Arr. by Ken Berg

Carla Kountoupes, violin

Ken Berg's arrangement of this favorite Austrian carol is perfect to remind us of the solemn peacefulness possible on long, cold nights. The Ensemble is joined by Carla Kountoupes on violin and Bill Epstein on piano for this memorable arrangement.

Still, still, still; one can hear the falling snow
for all is hushed, the world is sleeping;
Holy star its vigil keeping.
Still, still, still; one can hear the falling snow.

Sleep, sleep, sleep; 'tis the Eve of our Saviour's birth.
The night is peaceful all around you.
Close your eyes, let sleep surround you!
Sleep, sleep, sleep; 'tis the Eve of our Saviour's birth.

Dream, dream, dream of the joyous day to come.
While guardian angels without number
watch you as you sweetly slumber,
dream, dream, dream of the joyous day to come.

To make is to be together

Thoughtfully sourced

Carefully curated

Natural fabric
and fiber

Let's get together at
hacersantafe.com



311 Montezuma Avenue, Santa Fe
505.467.8174



A Christmas Telling of St. Bride of the Isles

Text: Raymond Raney (2022)

Music: Sarah Jaysmith

World Premiere

Women's Ensemble board vice president and secretary, Joy Ice, and her husband, Ron Latimer, commissioned this work for our 42nd season. St. Bride (or St. Bridget) is a beloved Irish/Scottish 11th-century saint who, according to legend, was brought from Ireland to Bethlehem to serve as midwife at Jesus' birth. Young Irish composer Sarah Jaysmith joined with poet Raymond Raney to take us on a Celtic journey celebrating St. Bride.

Holy Mother, Holy Maiden,
Holy Fam'ly, Holy Child,
From Holy Isles was she carried
To kneel and tend the infant mild.

On that silent night of mystery,
When sang the world of joy to be,
Angels harkened shepherds sleeping,
And stars beckoned come and see.

None did see the angels bearing
An elder saint to Mary's side.
There to comfort and deliver
A babe to breathe and then to cry.
Spirit of Eire once forged Brigid.

Came Bride from across the sea.
Like the Celtic Knot she circled,
Her life and soul eternally.

Crossing, twining, interweaving,
circling, winding, inbetweening.
Hewn from blessed oak beginning,
Wed by vows to Christ the King.

I am she, though most forgotten,
Amidst the cries I eased the pain.
There among the lambs so gathered,
I cherished words the shepherds sang.

With my songs I calmed the Virgin,
As she sought to bear God's own.
There I soothed the fearful Mary,
And at his birth did I belong.

With my tears I washed his body,
Word made flesh and all made one.
Joyous night of celebration,
Angels sang to Christ alone.

With my hands I touched the Maiden,
In her face God's love I found,
Knowing she will grieve his passion,
And her tears will wet the ground.

For this moment I am with him,
By his side I kneel and pray,
I will teach him, I will tell him,
Knowing more than I can say.

Weldon's
MUSEUM HILL CAFÉ

📶 📷 📺

Lunch 11-3
TUESDAY-SUNDAY
505.984.8900
www.MuseumHillCafe.net
710 Camino Lejo, Santa Fe. NM 87505

The advertisement features a central white text area with the café's name and contact details. It is surrounded by six photographs: top-left shows a sandwich and a salad; top-right shows a woman sitting at a table; middle-left shows a woman playing an acoustic guitar outdoors; middle-right shows a woman sitting at a table; bottom-left shows a woman playing an acoustic guitar outdoors; bottom-right shows a plate of salmon and a glass of orange juice.

Ave Maria "Tanti anni prima" Music: Astor Piazzolla

Carla Kountoupes, violin ~ Bill Epstein, piano

Argentine composer Astor Piazzolla spins a beautiful melody, played by Carla Kountoupes on violin and Bill Epstein on piano, that awakens the sacred in our hearts.

Christmas Snowflakes

Text: Sasha Isabella Alexander (2011)
Music: Laura Hawley

Canadian composer Laura Hawley was mesmerized by a poem by the youthful poet Sasha Isabella Alexander of Houston, Texas. The alternating of meter from 7/8 to 6/8 helps us visualize the vagaries of the winter wind and swirling snowflakes on Christmas night.

Oh, to be a snowflake, born on Christmas night.
Soaring through the air, floating with delight,
Down, down, down below. Listen, don't you hear?
The joyful chimes of Christmas, ringing out good cheer.

Dancing high, we gracefully sway,
As we dance to a winter's night ballet.
Sometimes fast, then maybe slow,
We dance our way to the town below.

Winter Awakening

Text and music: Robbie Smith
Music: Arr. by Erica Phare-Bergh

Carla Kountoupes, violin
Lynn Osborne, recorder

Erica Phare-Bergh arranges the work of Nova Scotian songwriter Robbie Smith in a charming musical experience for women's voices, piano, recorder and violin. Despite the bleakness and chill of winter, we sense spring will arrive, but while we wait for the seasons to change, we find pleasure in a "hearth-fire song."

Wind awakens winter in me
and leaves my spirit bleak and barren,
Yearning for fond moments to be
and the spring in all its fragrant finery.

Skies are dressed in dull shades of gray
and the farmland fields lie sleeping fallow.
A lone birdcall takes me away
to future promise far away from today.

Through the chill still will we sing.
Sweet transitions winter to spring
spur the seasons on 'til they change
the bleakness, the blackness,
the bitter winter rains.

The wind bestirs the last of the leaves,
decaying, dancing ghosts of summer.
The gales return and sweep through the trees,
Seeking brittleness and frailty.

The snows begin to blanket the dawn.
Twigs and branches creak and quiver,
while I retreat, where dreamers belong,
to find pleasure in a hearth-fire song.

Through the chill still will we sing.
Sweet transitions winter to spring
Spur the seasons on 'til they change,
believe 'til belief turns the cold snows to warm rains.

Flames return new hope to my heart
though the grip of frost grows tighter,
but brighter thought from each thrown spark
join the kindle glow, dispelling the dark.



In the Allegro
Center
2008 St. Michael's
Drive, Santa Fe

Phone: (505) 473-1901

First Place Winner
22 years in a row!

Hours:
Mon-Fri 9:00 - 5:30

Serving Santa Fe's
Leading Artists,
Galleries & Collectors
since 1973!



Santa Fe
2801 Rodeo Rd
(505) 471-3800
JoesDining.com

Joe's
dining

Locally-sourced
European-influenced
American comfort food

Bring a Torch, Jeannette, Isabella!

Text: French traditional carol
Music: Arr. by Sarah Jaysmith

Sarah Jaysmith, this season's commissioned composer, brings to life the excitement at the creche of the Christ child. What a wonderful party with refreshments, during which quiet must be maintained!

Bring a torch, Jeanette, Isabella! Bring a torch, to the
cradle we'll run!
It is Jesus, good folk of the village, Christ is born, and
Mary calls us.
Ah! Ah! Beautiful is the mother! Ah! Ah! Beautiful is
her son!
Who is that who comes here a-knocking? Who is that
knocking here at the door?

Open up! I've arranged on a platter wonderful cakes
for all who want them.
Knock! Knock! Open the door now, quickly! Knock!
Knock! Open and let us in!
It is wrong when the baby is sleeping, it is wrong to
make so much noise.
Please, be quiet, do not wake the baby. Jesus may
rouse at any moment.
Hush! Hush! See how the babe is dreaming! Hush!
Hush! See how he sleeps so well!
Gently now, in this little stable, gently now, come
close to the crib.
Jesus is such a beautiful babe! His skin is so pale! His
cheeks are rosy!
Oh! Oh! See how he sleeps so soundly! Oh! Oh! See
how he smiles in dreams!

Hodie Christus Natus Est

Text: Latin liturgical text
Music: Kelly-Marie Murphy

Bill Epstein, piano

Kelly-Marie Murphy takes the traditional Latin text used in the Roman Catholic mass for the "My Soul Doth Magnify the Lord" ("Magnificat") for the service on Christmas Day and updates it with a fresh tune in changing meters, with an exuberant piano accompaniment.

Hodie Christus natus est,
Hodie Salvator apparuit:
Hodie in terra canunt Angeli;
Hodie Christus natus est.
Hodie exsultant justi, dicentes;
Gloria in excelsis Deo,
Hodie Christus natus est.
Alleluia!

Today Christ is born,
Today the Savior appeared:
Today Angels are singing on earth;
Today Christ is born.
Today the righteous are exulting, saying;
Glory to God in the highest,
Christ is born today.
Alleluia!

Wexford Carol

Text: English and Irish traditional carol
Music: Arr. by Laura Hawley

Bill Epstein, piano

Laura Hawley gives us an opportunity to slow down and go deeper in thought with her arrangement of this familiar English/Irish carol. Written in a meditative way with lush harmonies and slow tempos for both singers and piano, this Wexford Carol leads us to imagine an "earth without strife."

Good people all, this Christmastime, consider well
and bear in mind
What our good God for us has done, in sending his
beloved Son.
With Mary holy we should pray to God with love this
Christmas Day;
In Bethlehem upon that morn there was a blessed
Messiah born.

Near Bethlehem did shepherds keep their flocks of
lambs and feeding sheep;
To who God's angels did appear, which put the
shepherds in great fear.
"Prepare and go," the angels said, "To Bethlehem, be
not afraid;
For there you'll find, this happy morn, a princely babe,
sweet Jesus born.

With thankful heart and joyful mind, the shepherds
went the babe to find,
And as God's angel had foretold, they did our Saviour
Christ behold.
Within a manger he was laid, and by his side the
virgin maid,
Attending on the Lord of life, who came to earth to
end all strife.

A Winter Ride

Text: Amy Lowell
Music: Joan Szymko

Bill Epstein, piano

In this sweeping, exhilarating portrayal of a horseback ride in winter, Joan Szymko captures the pure joy and feeling of oneness that come when a powerful creature, his freedom-loving rider, sunlight, sparkling snow crystals, earth and wind join together, resulting in a timeless, immortal moment! Amy Lowell, early writer of free verse, was described by famous poet Louis Untermeyer as "upon the surface of things ... a New Englander and a spinster. But inside everything was molten like the core of the earth. Given one more gram of emotion, Amy Lowell would have burst into flame and been consumed to cinders." We certainly feel her passion here!

Who shall declare the joy of the running!
Who shall tell of the pleasures of flight!
Springing and spurning the tufts of wild heather,
Sweeping, wide winged, through the blue dome of
light.

Everything mortal has moments immortal,
Swift and God gifted, immeasurably bright.

So with the stretch of the white road before me,
Shining snow crystals rainbowed by the sun.
Fields that are white, stained with long, cool, blue
shadows,

Strong with the strength of my horse as we run.
Joy in the touch of the wind and the sunlight!
Joy! With the vigorous earth I am one.

Shchedryk ~Encore~ Text: Ukrainian traditional carol Translation: From Wikipedia Music: Arr. by Mykola Leontovych

This Ukrainian New Year's carol is sung on New Year's Eve, with its story about a "little swallow" who flies into a household to sing of wealth coming in the spring. It is arranged by Mykola Leontovych, Ukrainian composer, conductor, ethnomusicologist and teacher, who specialized in a cappella choral music. He was assassinated by a Soviet agent in 1921. We think of the courageous Ukrainians with this piece.

Shchedryk, shchedryk, shchedrivochka,

pryletila lastivochka
stala sobi shchebetaty,
hospodarja vyklykaty:
"Vyjdy, vyjdy, gospodarju,
podyvysja na kosharu,
tam ovechky pokotylys',
a jahnychky narodylys'.
V tebe tovar ves' khoroshyj,
budesh maty mirku hroshej.
V tebe tovar ves' khoroshyj,
budesh maty mirku hroshej.
Khoch ne hroshi, to polova,

v tebe zhinka chorno brova."

Bountiful evening, bountiful evening,
a New Year's carol,

a little swallow flew into the household
and started to twitter,
to summon the master:
"Come out, come out, O master,
look at the sheep pen,
there the ewes have given birth
and the lambkins have been born.
Your goods [livestock] are great,
you will have a lot of money, by selling them.
Your goods [livestock] are great,
you will have a lot of money, by selling them.
If not money, then chaff from all the grain
you will harvest,
you have a dark-eyebrowed beautiful wife."

**Thank you for sharing our music,
and may you enjoy these magical
days and nights of December as
we move toward
the winter solstice!**

Permissions

The following texts are used with permission from the publishers:

Larkin: Adam Lay Ybounden. © 1996 Cypress Choral Music. All rights reserved.

Hawley: In dulci jubilo. © 2019 Cypress Music Press. All rights reserved.

Covington: Alleluia, Adorare. © 2022 JEHMS, Inc. All rights reserved.

Gjeilo: Tundra. © 2011 Walton Music Corp. All rights reserved.

Nickel: Miles to Go Before I Sleep. © 2019 Cypress Choral Music. All rights reserved.

Rutter: Deck the Hall. © 1980 Oxford University Press. All rights reserved.

Berg: Still, Still, Still. © 2008 Walton Music. All rights reserved.

Jaysmith: A Christmas Telling of St. Bride of the Isles. © 2022. Used with permission.

Hawley: Christmas Snowflakes. © 2015 Rhythmic Trident Publishing. All rights reserved.

Phare-Bergh: Winter Awakening. © 2021 Cypress Choral Music. All rights reserved.

Jaysmith: Bring a Torch, Jeanette, Isabella! © 2019 Cypress Choral Music. All rights reserved.

Murphy: Hodie Christus Natus Est. © 2018 Cypress Choral Music. All rights reserved.

Hawley: Wexford Carol. © 2019 Cypress Choral Music. All rights reserved.

Szymco: A Winter Ride. © 2018 Joan Szymko Music. All rights reserved.

Leontovych: Shchedryk. Used with permission of Vesnivka e-Library.



A composite advertisement for "The Candyman strings & things". On the left, a woman plays a teal ukulele in a music store. On the right, a yellow box contains the text: "Musical Instruments & Accessories", "The Candyman strings & things", "Santa Fe's Community Music Center", "505.983.5906", "info@candymansf.com", "candymansf.com", and "Sales • Service Lessons • Rentals".

An advertisement for "Susan's Christmas Shop". It features a green line-art logo of a teddy bear holding a Christmas tree. The text includes: "Susan's Christmas Shop", "115 E. Polace Ave.", "Santa Fe, New Mexico 87501", "505-983-2127", and "www.susanschristmasshop.com".

An advertisement for "Laura Fram Cowan" art. It shows various ceramic and pottery items: a blue and white bowl, colorful figurines, a red bowl, and a white vase. The text includes: "Laura Fram Cowan", "www.lauraframcowanartworks.com", "2212 Calle Cacique", "Santa Fe, NM 87505", "(505)982-3307", and "laura.f.cowan@gmail.com".



We are proud to support the Santa Fe Women's Ensemble

Enterprise Bank & Trust is proud to provide monetary support, expertise and volunteers to organizations and causes that align with our strategic initiatives, support our values and provide benefits to improve the communities we serve.

Together, there's no stopping you.
[enterprisebank.com](https://www.enterprisebank.com)

 **ENTERPRISE
BANK & TRUST**

MEMBER FDIC



(Photo by Ken Kirk)

Santa Fe Women's Ensemble 2022-23

Front row (L to R): Chris Wismer, Bill Epstein, Dr. Linda Raney, Julie Kirk, Sue Katz

Middle row: Nancy Maret, Susan Harris, Jill McCormick, Gwen Gilligan, Mickey Bond

Back row: Laura Fram Cowan, Lynn Osborne, Maggie Wright, Amy Gross, Nina Brown, Barbara Doern Drew



The One-Stop Shopping For All Your Decorating Needs

Carpet * Tile * Wood * Laminate * Cork * Bamboo * Vinyl * Stone * Sundries
Benjamin Moore Paints * Stains * Hunter Douglas Window Treatments * American Clay

Free Estimates - Free Design Consulting - Professional Installations

Established in 1984. Proudly Employee Owned since 2022.

Coronado Paint & Decorating

2929 Cerrillos Road, Santa Fe, NM 87507

505.473.5333

CoronadoDecorating.com

Santa Fe Women's Ensemble Bios

Winter 2022 Program

Director ~ Linda Raney

Celebrating her 33rd year with the Women's Ensemble, Dr. Linda Raney has been the music director and guiding spirit of the group since 1988. The choral arts are a passion for Linda, and she is especially committed to raising awareness about the gifts of women singers, instrumentalists and composers, and their contributions to our community.

Indiana University provided her an excellent music education, and she holds doctorate, master's and bachelor's degrees from that famous institution. She continues her musical studies in workshops, study groups and private music lessons.

In 2010, Linda received a Santa Fe Mayor's Recognition Award for Excellence in the Arts, an honor that celebrates her commitment to beautiful music. In June 2012, she



accepted the Adventurous Programming Award from Chorus America on behalf of the Women's Ensemble.

Linda is also the director of music/organist at First Presbyterian Church, where she has worked since 1986. Leading an ambitious church music program, she directs an adult choir, various vocal ensembles and the handbell choir, as well as manages the TGIF concert series. Offering fine concerts every Friday at 5:30 for the past 13 years, TGIF is becoming a unique Santa Fe experience.

In Santa Fe, Linda taught at the Santa Fe Community College for almost 10 years and served as choral director for the Santa Fe Symphony Chorus for more than 20 years.

In her spare time, she enjoys hiking, reading and enjoying the beautiful scenery of New Mexico.



State of Cha-Ching.

Belinda Maez-Ferrero, Agent

2641 Cerrillos Road
Santa Fe, NM 87505
Bus: 505-471-1313

belinda.ferrero.le3j@statefarm.com

Get discounts up to 40%.*
Saving money is important. That's why you can count on me to get you all the discounts you deserve.

GET TO A BETTER STATE™.
CALL ME TODAY.



*Discounts and their availability may vary by state and eligibility requirements.

For more information, please see or call a State Farm agent.

1101216.1

State Farm, Home Office, Bloomington, IL



Where the arts and academics are inseparable.



Santa Fe
WALDORF

Global K-12 for Unstandardized Minds

Pre-K - High School | 505.467.6431 | santafewaldorf.org

Singers

Mickey Bond, alto, joined the Ensemble in 2006. A mixed-media artist, she is co-owner of Artful Soul: Creative Experiences Santa Fe, a studio and gallery featuring creative art classes for adults. Artful Soul is located downtown in the Santa Fe Village Mall. (www.artfulsoulsantafe.com)

Nina Brown, alto, originally sang with the Ensemble in the 1980s. She has sung with the Pacific Chorale in California and the Kentucky Opera, among others. She holds a master's degree in voice from CSULB, Long Beach, CA. Nina sings in the First Presbyterian Church choir and studies with Sandra Twibell.

Laura Fram Cowan, soprano, has sung with the Zia Singers, various spiritual and a cappella choirs, and as a music thanatologist (hospice bedside singer). An avid traveler, hiker and gardener, Laura is also a painter, sculptor and glass artist. (lauraframcowanartworks.com)

Barbara Doern Drew, soprano, is excited to celebrate her 40th season with the Ensemble, having joined the group in 1982. What a joy it has been! A singer in SSA and SATB groups since early youth, she is currently taking voice lessons from Alicia Solomon. You can learn more about her professional tarot practice at tarotbddrew.com.

Gwen Gilligan, alto, has been with the group for nearly all its 42 years. She has sung when the group is both smaller and larger, and she loves the addition of so many new voices this season. Here's hoping you all enjoy this repertoire with our new, enhanced configuration of singers.

Amy Gross, soprano, joined the Ensemble in 2018. She performed for many years with the Austin Singers in Austin, TX, and has sung in several church choirs, including the First Presbyterian Church choir. Amy is a legal secretary, a freelance editor and an avid birder.

Susan Harris, soprano, is a new singer with the Ensemble in 2022. She has sung with the Santa Fe Symphony Chorus and the First Presbyterian Church choir. She has been in Santa Fe for 20 years and has a private practice in psychotherapy, specializing in trauma.

Sue Katz, alto, joined the Women's Ensemble in 2005. She has also sung with the Santa Fe Symphony Chorus, Santa Fe Pro Coro and Canticum Novum. Sue is a family physician at La Familia Medical Center and a volunteer provider at the Villa Therese Clinic.

Julie Kirk, soprano, is in her 22nd year with the Ensemble and manages our website and Facebook page. An insatiable reader, traveler and renowned chocoholic, Julie is a longtime volunteer with the Santa Fe Civitan Club. She also sings with the Zia Singers.

Nancy Maret, soprano, is enjoying her seventh season with the Women's Ensemble. Additional singing credits include many years with the Santa Fe Symphony Chorus and with the First Presbyterian Church choir. Her days are filled with telecommuting as a financial technology consultant, music, Ensemble treasurer work and being with her herd of horses and humans.

Jill McCormick, soprano, a lifelong singer and musician, has sung with the First Presbyterian Chancel Choir and the Symphony Chorus. She enjoys working with tuning forks to bring healing tone into the body in her practice at Ancient Tides Wellness. She expresses other creative outlets through training Waldorf teachers.



Lynn Osborne, alto, is a retired SFPS music teacher; previously she was a mural artist and scenic charge painter for stage and film. She has sung with the Zia Singers, Schola Cantorum, Coro da Camera, Coro Santa Fe and the Santa Fe Symphony Chorus. Lynn is delighted to join the Women's Ensemble!

Chris Wismer, alto, joined the Ensemble in 2017 and has served as the singer representative to the board of directors since 2020. She is a lifelong singer and has sung in school and church choirs, as well as folk singing groups, community choirs and the Santa Fe Symphony Chorus.

Maggie Wright, soprano, is a first-year member of the Ensemble and has also loved singing with the Zia Singers. She works as a homecare nurse and facilitates contemplative prayer with small groups of incarcerated people. She enjoys life in Española with her partner, J.J. Oviedo, and their fiery, whip-smart, stinking-cute 18-month-old, Uriel.

Bill Epstein, pianist, began studying piano at age 8 in Linden, New Jersey. Further studies were at the Chicago Musical College and Harvard University. In 2002, Bill moved with his wife, Sheila, to Santa Fe, and he became the Women's Ensemble accompanist in 2006. His work here has included church jobs, playing for eurythmy dance at the Santa Fe Waldorf School and accompanying the Santa Fe Symphony Chorus, Canticum Novum, the Men's Camerata and the Santa Fe Community College Chorus.

THE PANTRY Dos

Serving

- **Breakfast**
- **Lunch**
- **Dinner**

20 White Feather • Santa Fe, NM
thepantrydos.com • 505-365-2859

A Gentle Way to Help Your Body Heal Naturally

Body Cleanse Lymph Release

Most ailments, pains, and other symptoms of aging can be linked to the slow build-up of lymphatic congestion in the body's immune system. When part of the lymph system gets congested it can create pain or discomfort in many different ways. The body contains more lymph fluid than blood and it relies on muscle movement to propel it through, then out of, the body.



Since 2004 I have been a certified Decongestive Lymphatic Therapist using a simple, painless method that provides gentle, high frequency, extremely low energy physical vibration with acoustic waves, electrostatic field and electro-pressure all aimed directly at lymphatic fluids. This method easily, effectively, breaks up lymphatic congestion allowing it to naturally leave the body.

There are so many different ways Lymph Release works successfully for so many of my clients to treat a variety of symptoms and conditions such as:

**COVID Recovery • Back pain
Sciatica • Arthritis • Abdominal pain
Lymphedema/lipedema**

Learn more at:
margocovington.com/lymphatic/testimonials

Call me at 505.982.0044
for an appointment

**Ask about a free 15-minute
introductory treatment.**

Body Cleanse Lymph Release™
Margo Covington

THE
SANTA FE
OPERA



2023

JUNE 30 – AUGUST 26

Orfeo

MUSIC

Claudio Monteverdi

WORLD PREMIERE

Orchestration by Nico Muhly

LIBRETTO

Alessandro Striggio

8:30 pm July 29

8 pm August 2, 11, 16, 24



TOSCA

Giacomo Puccini

THE FLYING DUTCHMAN

Richard Wagner

PELLÉAS ET MÉLISANDE

Claude Debussy

RUSALKA

Antonín Dvořák

ORFEO

Claudio Monteverdi

World Premiere Orchestration
by Nico Muhly



View our
Health & Safety
Policies

#OpenAirOpera

Orfeo Illustration by Benedetto Cristofani

For tickets and more information visit
santafeopera.org or call 505-986-5900

Morgan Stanley



Morgan Stanley is proud to support

Santa Fe Women's Ensemble

Don Meccia

Assistant Vice President

Financial Advisor

150 Washington Avenue

Santa Fe, NM 87501

+1 505 988-7724

Donald.L.Meccia@morganstanley.com

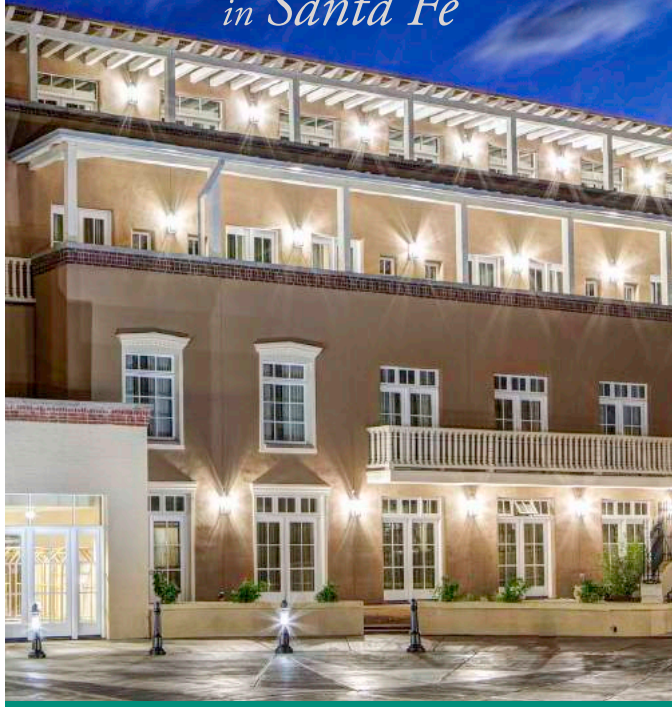
<https://advisor.morganstanley.com/donald.l.meccia>

© 2022 Morgan Stanley Smith Barney LLC. Member SIPC.

SUP001 CRC 3942178 01/22 CS 258450_1997812 02/22

DRURY

PLAZA HOTEL.
in Santa Fe



Redefining Hospitality

In the heart of historic Santa Fe, walking distance to The Plaza, sits on five beautiful acres and brings friendly, award-winning hospitality to the City Different.

The 182-room hotel features all of the renowned amenities of Drury Hotels, a new onsite dining experience, the Kitchen + Bar, as well as modern, spacious light-filled rooms with stupendous views of the Santa Fe skies.



Relax and unwind with a cocktail or bite in our lobby bar. Experience the Kitchen + Bar, an onsite dining experience featured at the Drury Plaza Hotel in Santa Fe.

1-800-DRURYINN • DruryPlazaSantaFe.com

Commissioned Composer ~ Sarah Jaysmith

Sarah Jaysmith is an award-winning music director, composer, piano teacher and accompanist. She studied composition under Dr. Joseph Grocock as part of her Bachelor of Music Education from Trinity College, Dublin, and has been composing and arranging ever since!

Sarah's two compositional loves are choral music and musical theater. She has sung in many choirs, including the Dublin College of Music Chamber Choir and the RTÉ Philharmonic Choir. She has composed and arranged many works for choir and has also composed two musicals (*Waking Dreams* and *One Plus One*) and written the music for over 60 songs. She was the resident music director and arranger for the Broadway Chorus (Vancouver, BC) for 14 years.



Sarah particularly loves composing for SSAA choirs. Her arrangement of "Gartan Mother's Lullaby" was published by Pavane Publishing in 2016, after being premiered by Elektra Women's Choir (Vancouver, BC). Elektra (under the direction of Morna Edmundson) also commissioned her to arrange "Bring a Torch, Jeanette, Isabella," which was published by Cypress Choral Publishing in 2019. Both pieces were premiered at their Christmas concert, "Chez Nous," in 2015. In 2018, she was commissioned by Bella Voce, a women's choir in Reno, Nevada. Bella Voce (directed by Jennifer Tibben) asked her to compose an original piece, "Stronger Together," which premiered in their spring concert that year.

Sarah is honored and thrilled to have been chosen as this year's commissioned composer for the Santa Fe Women's Ensemble and to have the chance to work with Raymond Raney's powerful text.

She is originally from Ireland and has recently moved back there after living in Canada for many years. She lives with her husband, Gil; her son, Galen; and their two house rabbits, Ethan and Freda.

Poet ~ Raymond Raney

Raymond Raney describes his lifelong love affair with poetry this way: "I write. I have been writing since the fifth grade. But I've always thought of myself as a poet. Not that I'm published, but that has been my choice. I write for myself and for those for whom I write my poetry."

"My formal higher education began with a major in English literature with an emphasis on creative writing, but journalism became my second major, and soon I was writing for a living. However, poetry was the constant, a way of apprehending feelings and focusing myself."

"I worked as a journalist for 15 years and came to Santa Fe as news editor at the Santa Fe New Mexican. When that career path ended, I moved my focus to the visual arts and received degrees in art history and photography, and taught media studies at the University of New Mexico and Santa Fe Community College. After 12 years, I answered the call to ministry and was ordained as an Episcopal priest in 2006."

Fr. Raney's ministry began at St. Bede's in Santa Fe. He was rector of Church of the Holy Cross in Edgewood for nearly 10 years before being appointed Canon to the Ordinary of the Episcopal Diocese of the Rio Grande. Although retired in 2019, he currently serves as interim Priest in Charge at Trinity on the Hill Episcopal Church, Los Alamos.

Concerning the Women's Ensemble's 2022 commission, *A Christmas Telling of St. Bride of the Isles*, Raymond explains, "Having previously worked with composer Linda Rice Beck, I was asked to write a poem based on the 1913 painting *St. Bride* by John Duncan. In keeping with the legend, the work depicts two angels bearing *St. Bride* from the Isles of Scotland to the Nativity in Bethlehem to serve as midwife to the birth of the Savior. Collaborating with Sarah Jaysmith on the text of the poem was a delight."

Guest Musician ~ Carla Kountoupes

Carla Kountoupes, violinist, is a member of the Santa Fe Symphony Orchestra, Arizona Opera Orchestra, Santa Fe Pro Musica Chamber Orchestra and Piazzolla da Camera Piano Trio. Carla has toured and performed professionally with orchestras and chamber ensembles in Central America, Taiwan, Germany and all over the United States, including as a member of the New Century Chamber Orchestra in San Francisco and the Costa Rican National Symphony Orchestra. She enjoys performing and recording many genres in addition to classical, including Latin/world, alt-rock/pop and jazz.



Photo by Marghreta Cordero aka Nacha Mendez

A dedicated music educator, Carla holds a Master of Music degree in Music Teaching. She has taught private violin lessons to children and adults for more than 25 years and is currently on the faculty at the New Mexico School for the Arts. In 2016, Carla was awarded Music Teacher of the Year by the American String Teachers Association (ASTA) of New Mexico, and she received the Santa Fe Public Schools' 2017 Teachers Who Inspire Award. She is a graduate of Oberlin Conservatory (violin performance) and Oberlin College (English literature).

Carla's violin was made in the 1740s and was inherited from her grandfather.

With roots originating from the family's Champagne house in Bethon, France, Gilbert Gruet moved his family to New Mexico in 1984 to embark on the greatest challenge of their lives—to make the best Méthode Champenoise sparkling wines outside of Champagne. More than 25 vintages later, Gruet Winery has achieved unprecedented acclaim—including *Wine Spectator's* Top 100—and remains a favorite of the nation's top sommeliers.

TASTING ROOMS OPEN 7 DAYS A WEEK

SANTA FE
210 Don Gaspar Ave. inside the historic Hotel St. Francis
(505) 989-9463

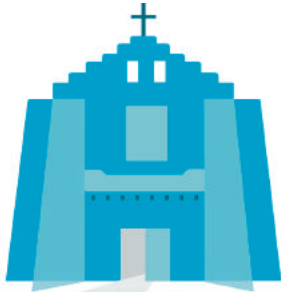
ALBUQUERQUE
8400 Pan American Freeway N.E. | (505) 821-0055

GRUET
WWW.GRUETWINERY.COM

ANN J. HACKETT
AJH GRAPHIC DESIGN



505.690.8177
ANN@AJHGRAPHICDESIGN.COM
WWW.AJHGRAPHICDESIGN.COM



FIRST PRESBYTERIAN CHURCH
of Santa Fe

Sundays

Morning Song 9:30AM
Traditional 11:00AM

Tuesdays

Fireside Chat
with the Mystics 5:00PM

Wednesdays

Morning Prayer 7:00AM
Celtic Even Song 5:30PM

Fridays

Bible Study 11:00AM
TGIF Concert 5:30PM

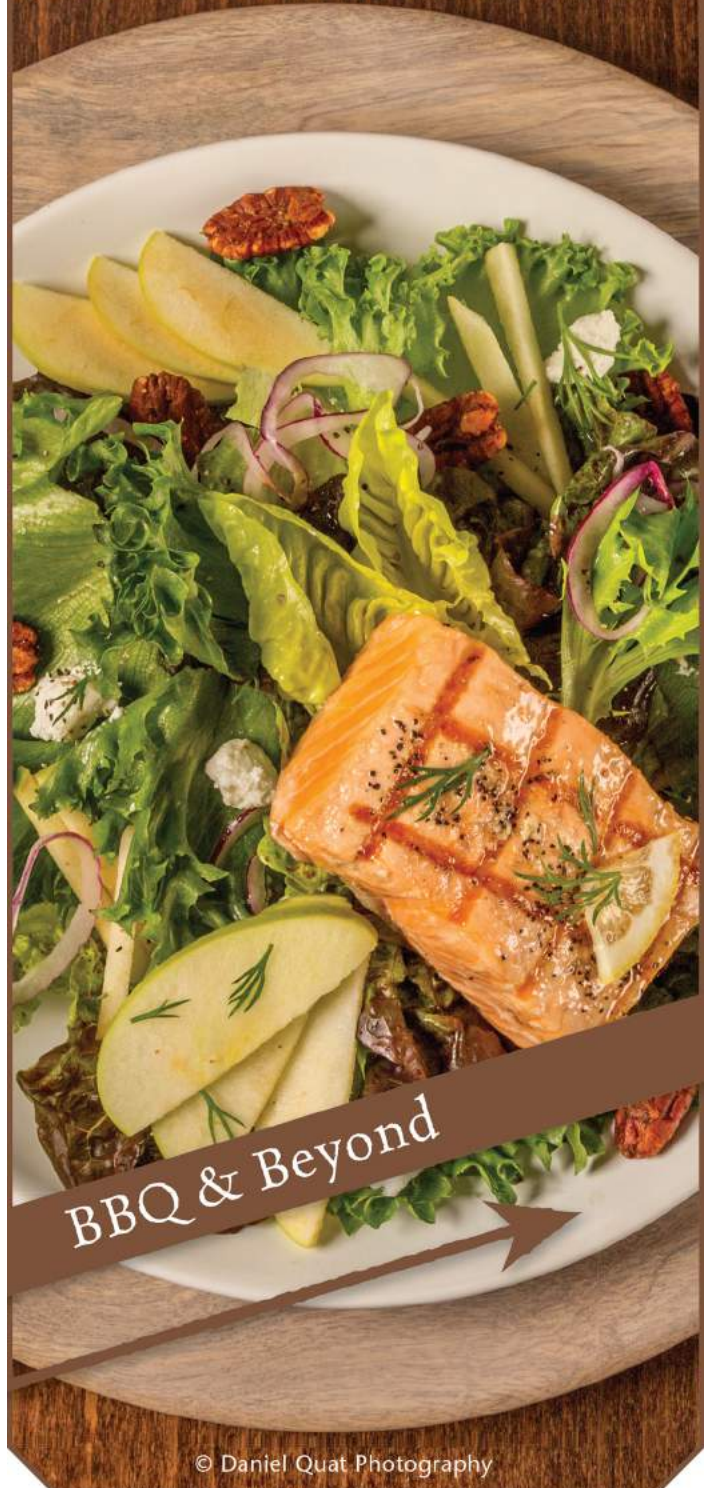
208 Grant Avenue
Santa Fe NM 87501
505.982.8544
fpcsantafe.org

The Ranch House

Great Food + Good Times

2571 Cristos Rd, Santa Fe
Across from the Auto Park near Kohls
505-424-8900

theranchhousesantafe.com



© Daniel Quat Photography

SANTA FE WOMEN'S ENSEMBLE CONTRIBUTIONS

July 1, 2020, through October 31, 2022

We are deeply grateful to our many donors for their generous support this year and in years past. Thank you.

BENEFACTORS – \$1000+

David Beatty
Nina and Jim Brown
Martha G. Busé
Adrienne Ewing
Fomby Miech Fund
Gwen Gilligan
Amy Gross
Joy Ice and Ron Latimer
Joy A. Jahn and Frankie Overton
K. Paul and Keytha Jones
Nancy Maret
Maggie Odell
Raymond and Linda Raney
Chris Wismer and Scott Swearingen

PATRONS – \$500+

Ann Aceves
Maria Carlota Baca
James Beck and Linda Rice Beck
Mickey Bond
Caroline Burnett
Marlene and David Cushing
Emily and John Drabanski
Walter Drew and Barbara Doern Drew
Linda Gammon
Barbara Hutchison
Sue Katz
Julie and Ken Kirk
Gregory Maret
Constance Marks and Karen Miller
John and Gail Pasch
Marty and Richard Wilder

SPONSORS – \$250+

Catherine Gronquist
Susan Harris
Chris and Scott Haynes
Greta Kjolhede
Linda Mack and Wynn Berven
Daniel Maret
Donald and Patricia Meccia
Esther and Ralph Milnes
Mary G. Neff
Anne Noss
Susan Phillips
Merry Schroeder
Kelly Selvidge
Alicia Solomon
Charles Sulerzyski and Lisa Lindsay

FRIENDS – up to \$250

Anonymous
Aaron Alter
Amazon Smile
Dennis and Susan Angellis
Marilyn and Cris Barnes
Mikaela Barnes
Christine Benkert
Susan Bloch and Chuck Aldrich
David and Sarah Breckenridge-Sproat
Lynne Loucks Buchen
Lisa Buckley
Lisa and Dave Caldwell
Steven Cary
Janis Chitwood
Deborah Cole
Mary Ann and Donald C. Cost
Don and Claire Crawford
Judy Crocker
Betsy Dalgliesh
Deirdre and Owen Densmore
Paula and Neal Devitt
Norman A. Doggett
Linda and John Dressman
Charly Drobeck and Sam Berne
Harry Eberts and Jenny Harland
Phil Edgerton and Gayle Maxon
William Epstein
Belinda and Tony Ferrero
Paul and Andra Fink
Donna Gaab and Doug Dunn

Robin and James Gavin
Patricia B. Hagan
Jan R. Hamilton
Alan Hamilton and Sarah Sisk
Steven Harrison
Pamela Henline and Daniel P. Drobnis
Anita and Jeff Hett
Anne Hillerman
Vicki Holmsten
Julie Jones
Peter and Ruth Jones
Tammy Kubatek
Mary Kuhns
La Choza Restaurant
Carolyn Lamb and Stephen Reed
Dreah LaRue
Lynn Lee
Sandra Levine
Kellie A. Lincoln
Mary Ann Lundy and Donald Wilson
Peter Lyons
Linda Marianiello and Franz Vote
Janice Mayer
Darcy McGrath
Peter Merrill and Ruth Wallack
Grace Mitchell
Rose Mary Molnar
Edward J. Nolan
Sarah Anne
Warren and Veronika Ostergren
Melinne Owen and Paul Giguere
Lyn Payne and Kathy Thorpe

James Kallas Jewelers
James Kallas - Owner

custom fine jewelry
repairs and restoration
we buy gold and fine gems
computer-aided design
fine handmade jewelry


505-986-1955

Open Tuesday - Saturday
10 AM to 5:30 PM
Closed Sunday & Monday

2801 Rodeo Road
Santa Fe, NM
87507



**OVIEDO CARVINGS
& BRONZE GALLERY**



FEATURING THE WORK OF
MARCO A. OVIEDO

961 STATE ROAD 76 * (505)351-2280
WWW.OVIEDOART.COM

Barbara Platz
David G. Ponder
William Raney
Bonnie Renfro
Jane Riese
Andy and Sally Ritch
Carol J. Ritchie
Pat Roach

Heather Robertson
Robin and Sam Rodar
Jose and Mary Ann Rodriguez
Constance Romero
Barbara G. Roush
Gail Samota
Sally Shockey
Brian and Carol Smith

Katy Smith
Alice Tinkle
Pauline and Jim Toevs
Alex Traube and Cathy Morlock
Heather Weir
Brahna and Janusz Wilczynski
Jean and John Withers
Gretchen Yost

TRIBUTES

In honor of Linda Beck: Linda Mack and Wynn Berven, Brahna and Janusz Wilczynski

In honor of Gwen Gilligan: Maria Carlota Baca

In honor of Connie Marks: Joy Jahn and Frankie Overton, Kelly Selvidge

In honor of Nancy Maret: Dr. Lisa Buckley, Daniel Maret, Gregory Maret, Charles Sulerzyski and Lisa Lindsay

In honor of Maggie Odell: Edward Nolan

In honor of Linda Raney: Joy Ice and Ron Latimer

In memory of Marilyn Freyman: Brian and Carol Smith

In memory of Violet Gilcher Sharpe: Dr. Lisa Buckley

In memory of James Jorgensen: Joy Ice and Ron Latimer

In memory of Karen Miller: James Beck and Linda Rice Beck, Susan Bloch and Chuck Aldrich, Marlene and David Cushing, Fomby Miech Fund, Patricia Hagan, Joy Ice and Ron Latimer, Joy A. Jahn and Frankie Overton, Ken and Julie Kirk, Nancy Maret and Tim Willson, Connie Marks, Warren and Veronika Ostergren

VOLUNTEERS & IN-KIND DONORS

Members of the board of directors, the administrator, singers of the Women's Ensemble and the music director contribute in ways too numerous to list to make these concerts possible. Many thanks to all of them for their enthusiastic efforts and hard work on behalf of making beautiful music. Their names are listed elsewhere in this program. In addition, we are grateful to the following supporters for giving generously of their time, expertise and services:

Sue Benedict
Doug Conwell
Emily Drabanski
John Drabanski
Walter Drew

Doug Escue
Francine Foster
Ken Kirk
Ann MacVicar
Beth Preble

Andy Ritch
Pat Roach
Barbara Roush

GHIASSI PERIODONTICS, LLC
IMPLANTS PERIODONTICS

JORDAN Z. GHIASSI, DMD

2100 CALLE DE LA VUELTA
STE. E101
SANTA FE, NM 87505

P 505-988-8822
F 505-988-8824

 **PET FOOD EMPORIUM**

Natural Foods · Supplements · Supplies

807 Cerrillos Road, Santa Fe, NM 87505

www.tulliverspetfood.com tulliverssantafe@gmail.com

Mon-Wed-Fri 9:30-6:00 Tues-Thurs-Sat 9:30-5:00 Sun - Closed

505-992-3388  Ellen Hutchins
Owner

SPECIAL THANKS & ACKNOWLEDGMENTS

The Santa Fe Women's Ensemble thanks the following for their vital contributions:

Accounting services	Rick Moore, Moore and Associates
Administrative support	Mary Kreutz
Archives and music library space	Linda and Raymond Raney
Ensemble photography	Ken Kirk
Grant writing	Nicolasa Chavez, Joy Ice, Keytha Jones, Nancy Maret and Connie Marks
Graphic design	Ann Hackett, AJH Graphic Design
Program compilation and editing	David Beatty, Barbara Doern Drew and Julie Kirk
Rehearsal space	First Presbyterian Church of Santa Fe
Video recording	Raymond Raney
Website design and hosting	Nancy Brown, studio x

2022–23 COMMISSION SPONSORSHIP

Commissioning new music for women's voices is a significant part of the Ensemble's mission. We are most grateful to this year's commission underwriters, Joy Ice and Ron Latimer, who have shown extraordinary support through their generous sponsoring gift. A Christmas Telling of St. Bride of the Isles by Sarah Jaysmith, the 40th commission in our 42-year history, will premiere in December 2022. We welcome your inquiries about sponsoring a commission. Please contact us at (505) 303-8648 or info@sfwe.org.

2022 ONLINE AUCTION

Our sincere thanks to all who generously donated items for our online auction fundraiser. Thanks also to those who purchased those items.

SANTA FE WOMEN'S ENSEMBLE FUND FOR THE FUTURE

The Ensemble thanks the Bateman/Noss family for its contribution in memory of Martha Bateman. This invested fund ensures the future of the Women's Ensemble, and we welcome contributions and bequests with deep gratitude.

SANTA FE WOMEN'S ENSEMBLE BOARD OF DIRECTORS 2022–23

David Beatty, President
Joy Ice, Vice President & Secretary
Nancy Maret, Treasurer
Maggie Odell, Director
Nicolasa Chavez, Director
Chris Wismer, Director
Terrell Falk, Director

We would like to thank those board members whose terms have ended in recent years. Many are continuing their efforts to support the Ensemble in various capacities:

Emily Drabanski
Adrienne Ewing
Rebecca Heindel

Mary Kuhns
Linda Larkin

Connie Marks
Mary Neff

Santa Fe Women's Ensemble Winter 2022

List of Commissioned Works

A Christmas Telling St. Bride of the Isles	Sarah Jaysmith	Winter 2022
Our Roots	Bob Chilcott	Winter 2021
The Raney Songs	Linda Rice Beck	Spring 2020, 2021
Mementos of the Compass of Time	David W. Beatty	Spring 2019
Tell Me/Oseh Shalom Ur'fuah	Karen Siegel	Winter 2017
Voice of My Song	Samuel Gordon	Spring 2017
Reina de la Noche	Z. Randall Stroope	Spring 2016
Words of Peace (דברי שלום)	Linda Rice Beck	Winter 2014
Kennst du das Land? (Do You Know the Land?)	Emma Lou Diemer	Spring 2014
That Passeth All Understanding	Bradley Ellingboe	Winter 2012
Love All in All	Joel Martinson	Spring 2012
The Circle	Linda Rice Beck	Spring 2011
Two Andalusian Songs	Stephen Paulus	Winter 2010
Listen	Kinley Lange	Winter 2009
Echoes of Assisi	Linda Rice Beck	Spring 2009
Every Stone Shall Cry, Gloria	Linda Rice Beck	Winter 2008
Ave Maria	Linda Rice Beck	Spring 2008
All This Night	Samuel Gordon	Winter 2007
Winter Solstice	Paul Carey	Winter 2006
Let There Be Joy	Daniel Gawthrop	Winter 2005
Seasonal Dances	Craig H. Russell	Spring 2005
Learn to Think Lizard	Naomi Stephan	Spring 2004
Taladh an Leinibh Iosa (Lullaby to the Infant Jesus)	Robert Rothchild	Winter 2003
A Jobim Sampler by Antonio Carlos Jobim	Robert C. Jones	Spring 2003
Chester Carol	Katherine Dienes	Winter 2002
Dreams, Rain, and Autumn	Robert C. Jones	Spring 2001
Magnificat	Lana Walter	Winter 2000
The Storke	Gerald Near	Spring 2000

To Crown the Year	John Ferguson	Winter 1997
We Are One	Michael Mauldin	Spring 1997
Goblin Market	Lawrence Cave	Spring 1996
Stabat Mater	Dean Roush	Spring 1995
Come Love We God	Lynne Palmer	Winter 1994
Epiphanies	Jean Belmont	Spring 1993
With This Child	Michael Mauldin	Winter 1990
Small Fry, Lazy Afternoon, Alone Together (Jazz arrangements)	Arr. Jack Manno	Spring 1989
Three Poems of Sylvia Plath	Shanna Suzanne MacLean	Spring 1984
Kyrie	Joseph Moore	Winter 1983
Homage to Emily Dickinson	Shanna Suzanne MacLean	Spring 1983
The Great Invocation	Shanna Suzanne MacLean	Winter 1982



Agent Stephen Gillespie

505-982-3604

www.sggroupinsurance.com

The Skyline Salon

GRETCHEN PAFFENDORF
1041W Don Diego • Santa Fe, NM • 505 983 1333

The Skyline Salon

MARGIE HICKS
1041W Don Diego • Santa Fe, NM • 505 983 1333

The Wonder of Women: On Their Shoulders We Do Soar

The Santa Fe Women's Ensemble sings music "By, About and For" women in their May concerts.

Hear music by early composers Hildegard von Bingen (1098-1179), Francesca Caccini (1587-c.1630), and Barbara Strozzi (1619-1677) that give us a rare glimpse of their genius.

Enjoy poignant poetry by Jane Austen (1775-1817) and her sister and mother; Eleanor Roosevelt and contemporary poets Joan Harjo, Maya Jackson, and Katerina Gimon.

Savor the sound of treble voices as they sing music composed especially for their voices.



The Program:

O Virtus Sapientiae Hildegard arr. Katerina Gimon

Poems of the Parlour Eleanor Daley

Eagles Rounding Out the Morning Joan Szymco

Jerusalem Luminosa Abie Bettinis

The Beauty of Your Dreams Joan Szymco

Aure volanti Francesca Caccini

Le Tre Gazie a Venere Barbara Strozzi

O Maria, quam pulchra es Barbara Strozzi

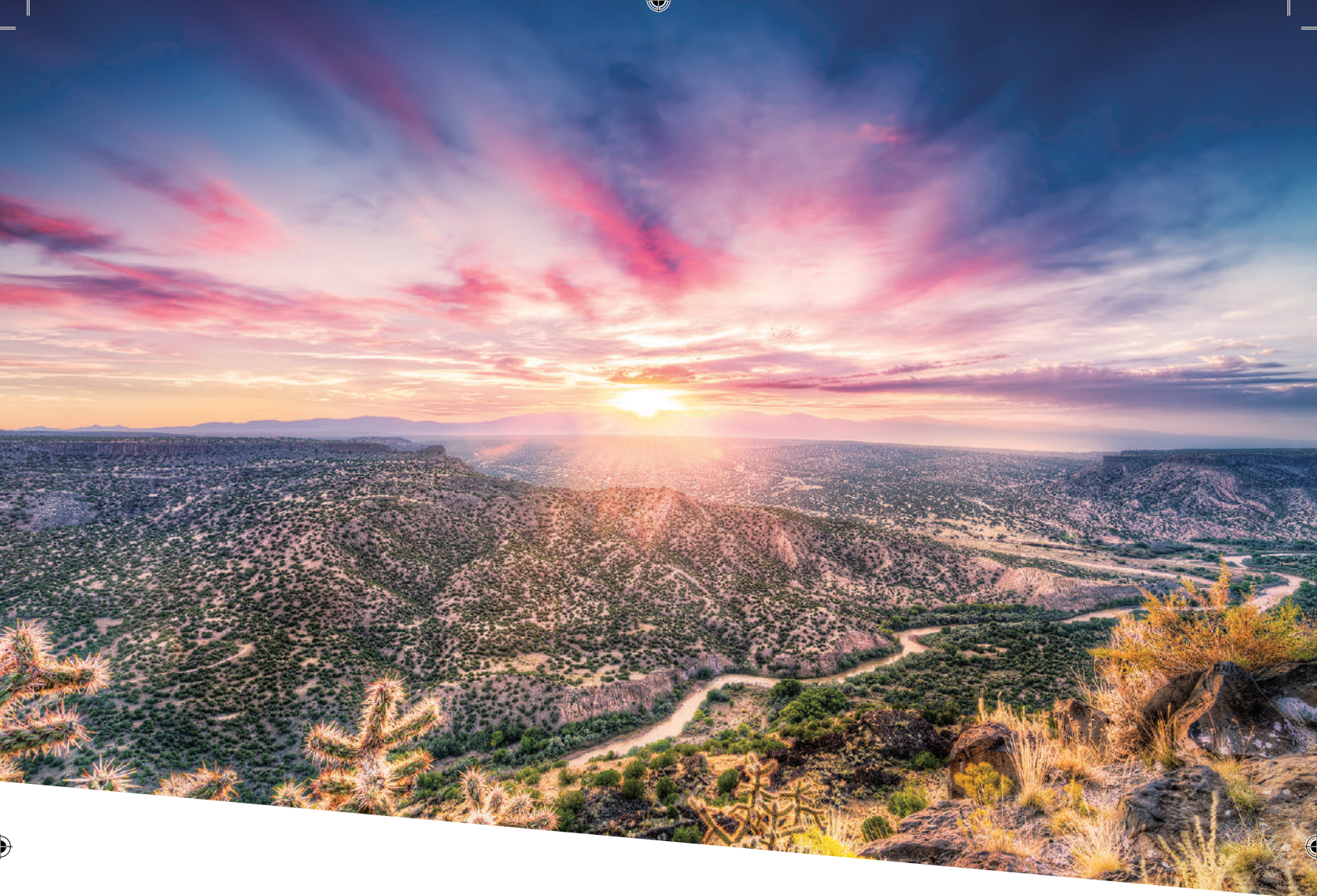
Warrior Kim Baryluk

Breathe in Hope Dale Trumbore

All Together We Are Love Katrina Gimon

Saturday and Sunday, May 6 and 7 at 3:00 p.m.

First Presbyterian Church at 3:00 p.m.



We're from the same place you are.

State ECU is proud to support the Santa Fe Women's Ensemble. We serve the heart of New Mexico. Discover rewarding accounts, affordable loans, fewer fees, and a personal approach to your finances – [discover the State ECU difference.](#)

800.983.7328 | SECUNM.ORG

 **state** EMPLOYEES
CREDIT UNION

LOCAL CONFIDENCE